

**2006  
Conference**

**10<sup>th</sup> - 14<sup>th</sup>  
October  
2006**

**Charles Sturt  
University**

**Wagga Wagga**

7

**Special Feature**

- ^ **TAFE NSW - Riverina Institute**  
**Graeme Anderson**  
**Head Teacher Agriculture**  
**Primary Industries Centre**
- ^ **Ag Connections**  
**Kerrie Sutherland**  
**Education Manager**  
**Education Centre**
- ^ **Charles Sturt University**  
**Agriculture Courses**

A large percentage of garden plants most likely die from over-watering than from the lack of water.

The Crops & Livestock department at the Primary Industries Centre offers a wide range of training in agriculture and related industries.

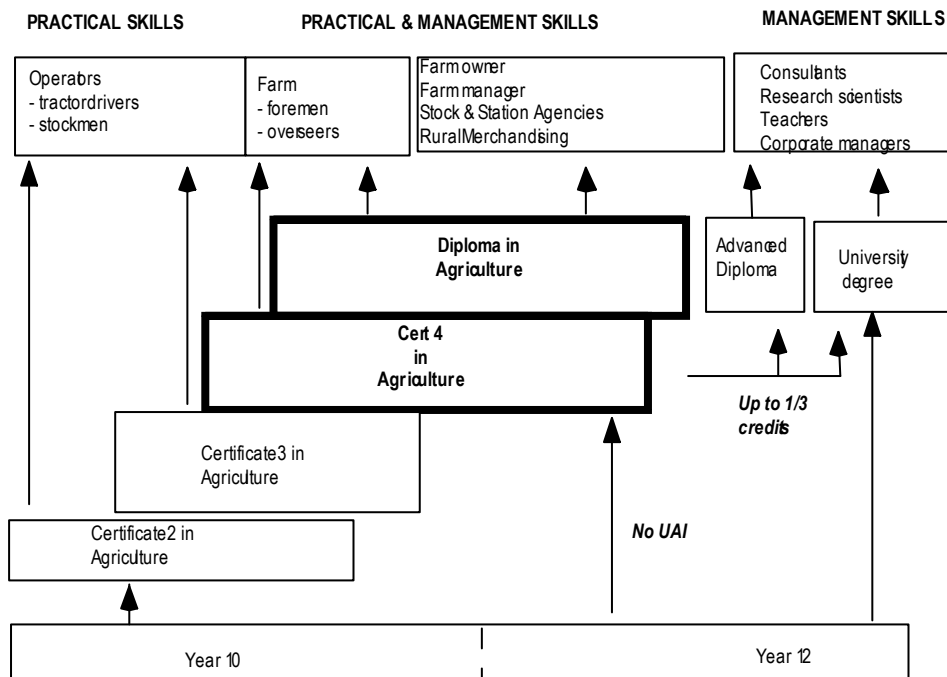
We offer agricultural training from Certificate II through to Advanced Diploma

- each level course can be completed in 1 year
  - o Cert II and Cert III 1 day per week as Trainees
  - o Cert IV and Diploma 4 days per week full-time study
    - also offered flexibly through Open Learning
  - o Advanced Diploma flexible delivery through Open Learning
- in Certificate courses we are able to offer a wide range of practical skills training using our own commercial farm and access to large-scale properties in the district
- at Diploma & Advanced Diploma levels we deliver quality training in enterprise and business management skills
- specialist training in tractors, ATV's, chainsaws, chemicals, is also available though short-courses
- professional wool classing and owner classing qualifications can be achieved through self-paced flexible study.

Staff come from a wide range of commercial agricultural backgrounds, with many of our part-time teachers actively involved in production agriculture or agriculture service industries.

Crops & Livestock also offers courses in Veterinary Nursing and Equine Studies through flexible evening classes.

**AGRICULTURAL CAREER PATHS**



**Award: Certificate IV (AQF)**

**Course Number: 2483**

Possible  
Agriculture course  
For your  
Agriculture  
Students

TAFE NSW – Riverina Institute  
Primary Industries Centre  
Cnr Coolamon & Farrer Roads  
Wagga Wagga NSW 2650  
Fax (02) 6939 5025, Tel (02) 6939  
5000  
<http://www.rit.tafensw.edu.au>



**Contact:**  
**Graeme Anderson**  
**Head Teacher**  
**Agriculture**  
**Primary Industries**  
**Centre**  
**(02) 6939 5040**

### Course Outline

This course is for people in the agriculture industry with some expertise who wish to develop advanced technical and supervisory skills. It also provides the underpinning knowledge required to apply these skills in the workplace.

You will learn how to organise and coordinate the procedures employees in the agriculture industry must carry out as well as learning technical skills that a senior employee, supervisor on an rural enterprise should have. You will also be able to implement and monitor occupational health, safe working practices and quality assurance practices to industry standards.

This course is also suitable for owners of agriculture operations who wish to enhance their technical and supervisory knowledge and skills.

### Career Opportunities

Farm overseer, farm foreman or farm supervisor.

### Articulation

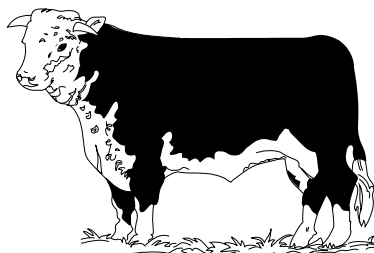
When you finish this course you may be able to apply for advanced standing in Agriculture Diploma 2195, including specialisations.

### Entrance Requirements

NSW School Certificate (or equivalent statement from another educational authority) and relevant experience, or completion of Certificate III in Agriculture, or equivalent, or relevant workplace or other appropriate experience.

### Attendance

4 ½ days per week for 1 year.  
A flexible Open Learning study option is also available.



### Further Information

TAFE NSW Fees:

Half Year: \$375.00  
Full Year: \$750.00

If you are receiving a Commonwealth benefit or Youth Allowance you may be eligible for an exemption from paying the TAFE NSW fee for one course per year. Contact your campus for further information.



Possible  
Agriculture  
course  
For your  
Agriculture  
Students

TAFE NSW – Riverina  
Institute  
Primary Industries Centre  
Cnr Coolamon & Farrer  
Roads  
Wagga Wagga NSW 2650  
Fax (02) 6939 5025, Tel (02)  
6939 5000  
<http://www.rit.tafensw.edu.au>

**Award: Diploma (AQF)**

**Course Number: 2195**

**Contact**  
**Graeme Anderson**  
**Head Teacher Agriculture**  
**Primary Industries Centre**  
**(02) 6939 5040**

### Course Outline

This course is for people in the agricultural industry with some expertise who wish to develop advanced technical and managerial skills. It also provides the underpinning knowledge required to apply these skills in the workplace.

You will learn how to manage the procedures employees in the agriculture industry must carry out as well as learning technical skills that a manager on a rural enterprise should have. You will also be able to implement and monitor occupational health, safe working practices and quality assurance practices to industry standards.

This course is also suitable for owners of agriculture operations who wish to enhance their technical and managerial knowledge and skills.

### Career Opportunities

Farm manager.

### Articulation

When you finish this course you may be able to apply for advanced standing in Agriculture Advanced Diploma 4239.

### Entrance Requirements

NSW Higher School Certificate (or equivalent statement from another educational authority) plus relevant experience, or completion of Certificate IV in Agriculture or equivalent, or relevant workplace or other appropriate experience.

### Attendance

4½ days per week for two years.

A Flexible Open Learning study option is also available



### Further Information

TAFE NSW Fees:

Half Year: \$500.00

Full Year: \$1000.00

If you are receiving a Commonwealth benefit or Youth Allowance you may be eligible for an exemption from paying the TAFE NSW fee for one course per year. Contact your campus for further information.





## Kerrie Sutherland

Po Box 24'  
Albury, N.S.W. 2640  
Phone: 0419 989 077  
Fax: 02 6043 1673

kerrie@agconnections.com.au  
www.agconnections.com.au

---

## KERRIE SUTHERLAND

A.B.N. 39 214 276 331

Ag Connections is a registered Australian business owned by Kerrie Sutherland. Kerrie established this business after identifying a need for specialized education and training for cattle breeders and the new generation of cattle enthusiasts. Ag Connections operates farmbis accredited courses, and youth cattle camps under the umbrella of a Registered Training Organization, TAFE Primary Industries.

The program covers topics ranging from

- Selection & structural soundness
- Nutrition & herd health
- Animal behaviour & breaking-in
- Show preparation, clipping & leading
- Judging, public speaking and marketing.

The **Youth Cattle Camps** are operating to cater for students from rural and non farming background to allow the opportunity for hands on experience to develop the skills necessary to compete in Handlers and Junior Judging competitions at local and Royal shows and also to exhibit cattle.

As an extension of the business Kerrie offers cattle consulting and organised tours for study groups and breed society's for the Australian and International market.

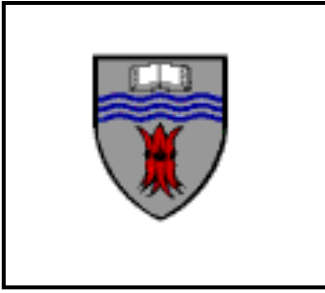
Further information can be found at my website or contact me on the above details.



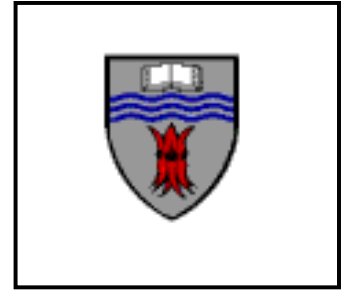
Marg Bowden  
Ag Connections  
Course Coordinator  
PH: 02 6946 2189  
FAX: 02 6946 2374  
MOB: 0412 189 000



Gerard Borg  
TAFE Primary Industries  
– Team Leader  
PH: 02 6939 5001  
Fax: 02 6939 5025  
MOB: 0429 086 092



**CHARLES STURT**  
UNIVERSITY



The School of Agriculture  
Wagga Wagga

**Study**

- . Agriculture
- . Horticulture
- . Agribusiness
- . Equine Science

*Every day is open day.  
You are welcome to visit  
at any time & tours  
can be arranged.*

**Courses available.....**

- ❖ Bachelor of Science with specialisation in:
  - Agriculture
  - Horticulture (environmental & production)
  - Agribusiness
  - Agronomy
  - Animal Production
  - Irrigation
- ❖ Bachelor of Applied Science (Equine Studies)
- ❖ Doctor of Veterinary Medicine (from 2005)
- ❖ Postgraduate courses: Honours, Masters, PhD
- ❖ Graduate Certificates & Diplomas

**Why Study at CSU?**

- Graduates are in demand.
- A University of excellence in regional Australia with a total of about 180 first year undergraduate students in agriculture, horticulture & equine studies.
- Close links with industry & research.
- Excellent student support services, bridging courses & career preparation.
- A long & distinguished history of agricultural education.
- Flexible study options – study by attending classes full time or part time, or by distance education.
- Accommodation on & off campus.
- Excellent sporting & social facilities

**Excellent career opportunities include:**

- \* Agronomist
- \* Researcher
- \* Teacher
- \* Farm manager
- \* Rural reporter
- \* Consultant
- \* Technical officer
- \* Resource manager
- \* Regulatory manager
- \* Nursery manager
- \* Landscape designer
- \* Crop protectionist
- \* Agribusiness officer
- \* Rural finance officer
- \* Extension/advisory officer
- \* Agvet chemical company rep
- \* Rural merchandise salesperson
- \* Landcare co-ordinator
- \* Quality assurance officer
- \* Animal husbandry manager
- \* Environmental manager
- \* And so on.....

**How to apply.....**

- Applications should be made to UAC or direct to the University
- Check with your Principal regarding early entry pathways
- UAI of 70 required for Agriculture, Horticulture & Equine Science.
- HSC Chemistry & Maths desirable
- Check the CSU web site
- Credit may be given for TAFE & other studies.

**Need more information?**

contact Judith Boadle ph 0269332801  
or email [jboadle@csu.edu.au](mailto:jboadle@csu.edu.au)  
or check our websites: <http://www.csu.edu.au>  
or <http://csu.edu.au/faculty/sciagr/sag>

